

Application

The U 6 K range of pumps is suitable for stationary and portable use.

It can be used as a drainage pump for mildly contaminated waste and ground water, in sumps with rain water, drainage or seepage water, silage liquor and also liquid manure. The high quality mechanical seal also makes the pump suitable for extracting abrasive media.

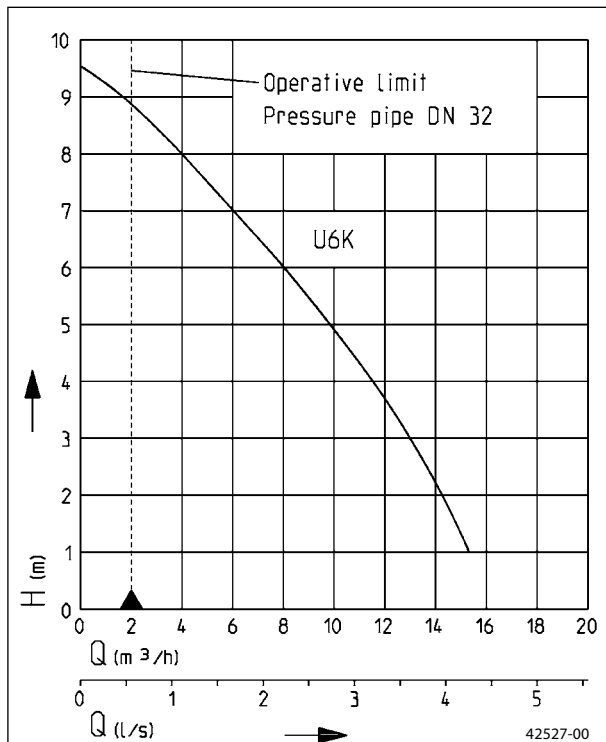
In stationary use the U 6 K ES/DS removes the waste water from domestic appliances such as dishwashers and washing machines (also high temperature). The guide rail system GR 32 offers all the advantages of fast and easy maintenance. Our ready-to-install collecting tanks extend the options for installation and use.

For supporting sewage water with heavy pollution we recommend our US series. Especially for the transportable use, in building site areas for example, our building pumps UB should be used.

If centrifugal submersible pumps are used outdoors, only a pump with 10 m cable without extension cable may be used in accordance with VDE Regulation 0100.



Performance



We reserve the right to change specifications without notice
 Pump performance is subject to ISO 9906 tolerances
 The minimum flow velocity in the pressure piping must be 0.7 m/s according to EN 12056.
 This data is represented in the performance curve as a limit of application.

- Continuous operation
- Flushing device
- Replaceable moisture sealed cable inlet
- Low level pumping by removing the strainer base
- SiC mechanical seal independent of rotation direction
- Safe to run dry
- 10/20 mm free passage with EIP technology



Submersible drainage pumps

Type	Maximum Height x Width	Discharge branch	Free passage	Cable quality H07RN-F-	Cable length	Weight approx.	Code No.
Pumps without level control							
U 6 K E	335 x 175 mm	1¼"	20 mm	3G1.0	10 m	6.0 kg	JP 00226
U 6 K D	335 x 175 mm	1¼"	20 mm	4G1.0	10 m	6.5 kg	JP 00228
Pumps with built-in level control (acc. to VDE, only to be used outdoors with 10 m cable)							
U 6 K ES	335 x 210 mm	1¼"	20 mm	3G1.0	3 m	5.5 kg	JP 00227
U 6 K DS	335 x 210 mm	1¼"	20 mm	4G1.0	3 m	6.0 kg	JP 00229
U 6 K ES	335 x 210 mm	1¼"	20 mm	3G1.0	10 m	6.0 kg	JP 09260
U 6 K DS	335 x 210 mm	1¼"	20 mm	4G1.0	10 m	7.0 kg	JP 09261

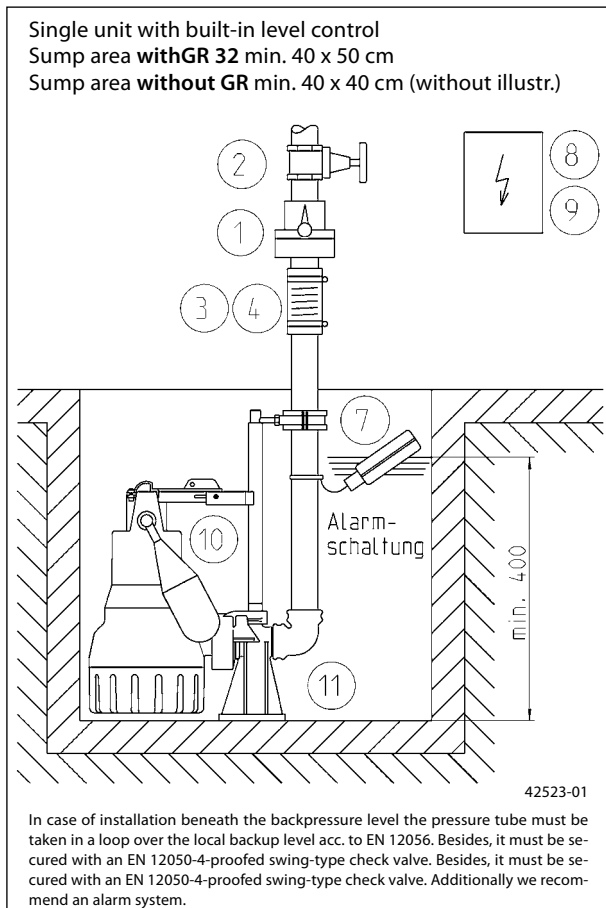
Performance

Type	Delivery head H [m]	1	2	3	4	5	6	7	8	9
U 6 K E/ES/D/DS	Flow rate Q [m³/h]	15.5	14.0	12.5	11.0	9.0	7.5	5.5	3.5	1.5

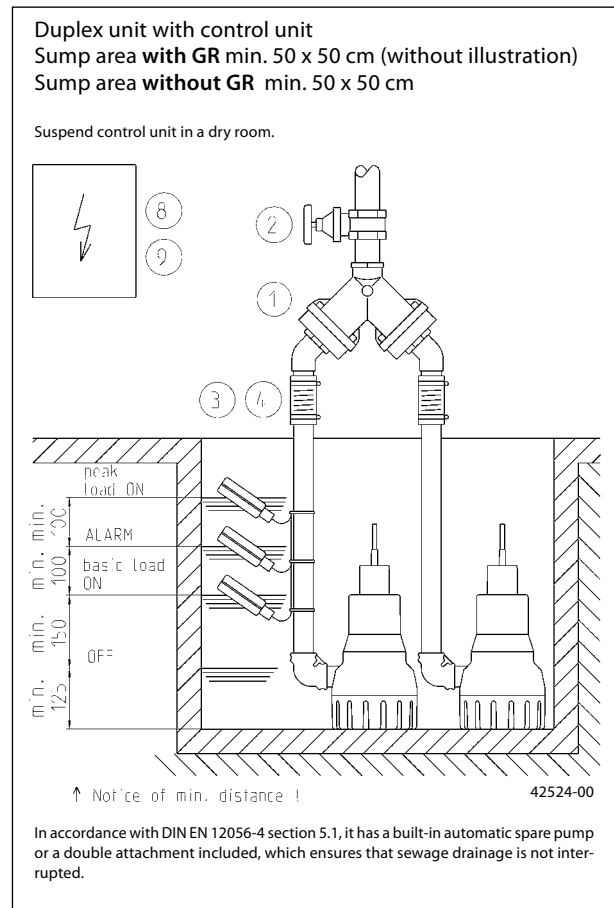
Electrical Data

Type	Type of current	Voltage Volt	Motor rating kW		RPM min. ⁻¹	Current Ampere	Motor protection	Plug
			P ₁	P ₂				
U 6 K E/ES	1-phase	1/N/PE~230	0.75	0.49	2645	3.3	integrated	Safety-
U 6 K D/DS	3-phase	3/PE~400	0.75	0.55	2678	1.3		CEE-

Example of single pump installation with GR



Example of duplex pump installation



Technical data

Pump

Vertical, single-stage, submersible, with foot strainer with 10 mm free passage – detachable for activating low level pumping. With the pump base installed, free passage is 20 mm. Volute casing with 1 1/4" male radial pressure branch, EIP-technology hydraulics with open 6-blade impeller.

Bearings

Common shaft for pump and motor, mounted in ball bearings and permanently grease lubricated.

Seal

Silicon carbide mechanical seal, intermediate oil chamber, shaft seal ring towards the motor section, safe to run dry.

Motor

Submersible motor, type of enclosure IP 68, insulation class B, motor thermostat for emergency switch-off on overheating with automatic switch-on after sufficient cooling, switched on via plug or automatic switching, moisture sealed cable inlet for protecting the pump in the event of damage to the cable, continuous operation when not submerged on account of its motor jacket cooling.

Material

Motor housing, shaft and screws in stainless steel, volute casing, impeller and control head in plastic (GRP), rubber insulated flexible cable.

Installation

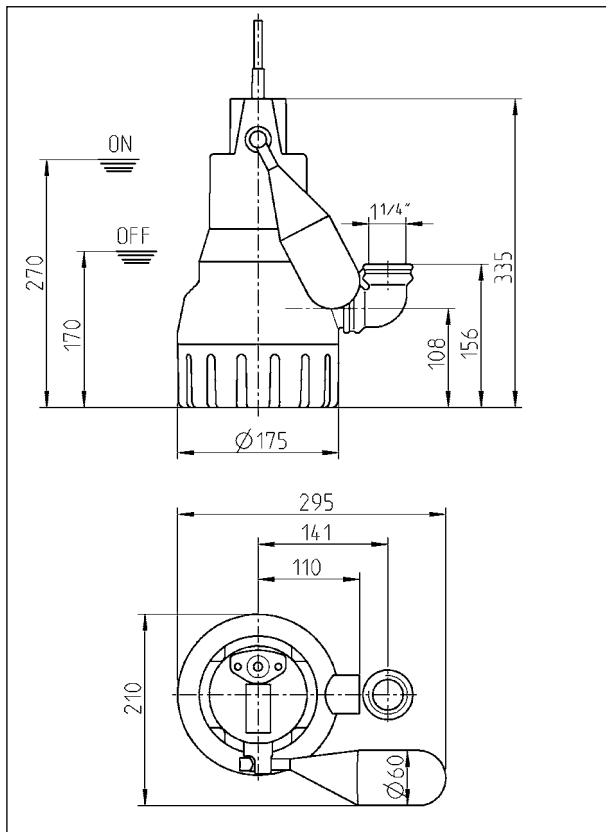
Install pump vertically (hose connection possible); if installed permanently, provide detachable connection, e.g. the uncomplicated and easy to maintain guide rail system GR 32.

Scope of supply

Pump ready for connection acc. to EN 12050 with 90°, 1 1/4" female connection elbow, cable and plug, S model with automatic level float switch.

The pump is delivered fitted with a strainer base which can be swapped for any of the accompanying pedestals in cases where a 20 mm clear passage is required.

Dimensions U 6 K (mm)



Dimensions GR 32 (mm)

