


**BEDU**  
= POMPEN =

**VERSA-MATIC  
PUMP**


# **1" Bolted Pumps with Plastic Center Sections**



**Side Discharge**



**Adjustable Manifolds**



**Leak Detector Bosses**

*Ink Transfer  
Chemical Feed  
Small Tank Recirculation  
Filling Operations  
Spray Gun Transfer Applications  
Truck and System Lubrication Dispensing*



**IDEX**  
IDEX CORPORATION

# E1 1" Bolted Pumps Now with a Plastic Center Section

**BEDU**  
POM PEN

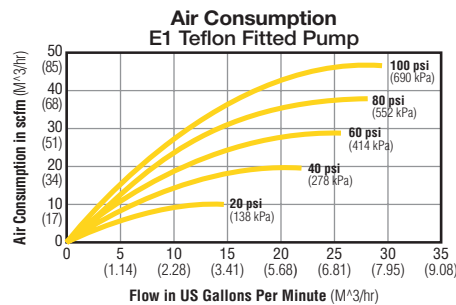
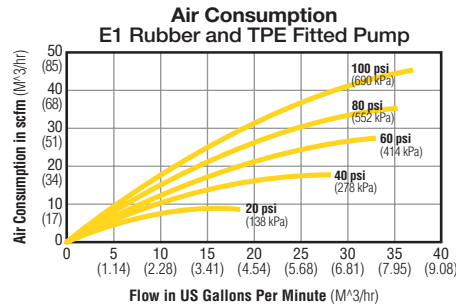
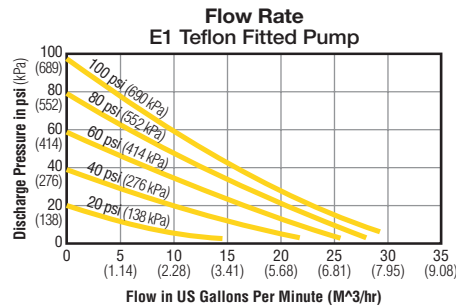
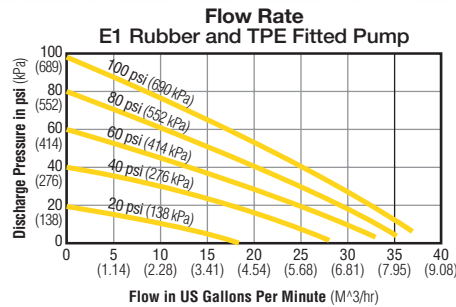
**Versa-Matic® Elima-Matic® E1** 1" pumps take versatility and reliability to a new level with a redesigned center section and the next generation air valve system. Constructed of plastic, the center section **resists corrosion** from even the most aggressive chemicals, while providing **improved operation** and **ease of maintenance**.

The E1 features the Elima-Matic Air Valve System — now with the new **Shoe-Valve technology**. That means in addition to non-stalling, non-icing, lube-free operation, the E1 virtually **eliminates blow-by** when the pump is on line but not in use.

To find out more about Versa-Matic E1 pumps and accessories, contact your local distributor or visit us at [www.versamatic.com](http://www.versamatic.com).

## PERFORMANCE

E1

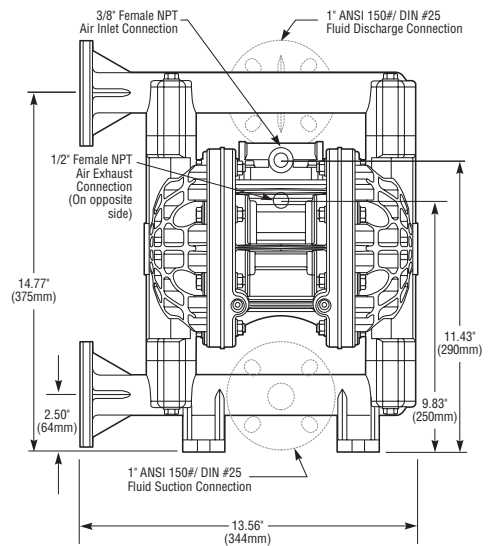


## DIMENSIONS

E1

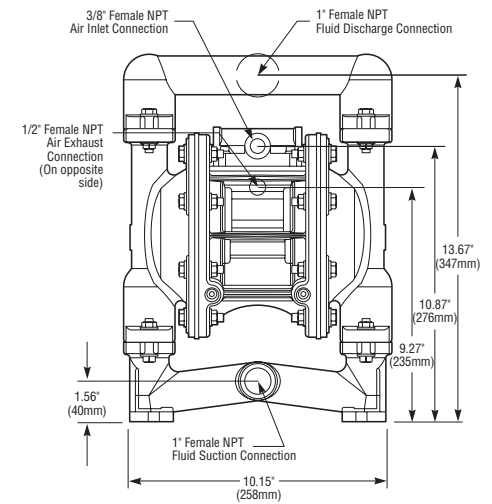
### E1 Plastic Pumps

Consult factory for certified drawings



### E1 Metallic Pumps

Consult factory for certified drawings



\* For E1 pumps fitted with Teflon® diaphragms, reduce water discharge figures by 20%. Suction lift is reduced to 10' (3.05m) dry and 20' (6.10m) wet.

## SPECIFICATIONS

E1

	English	Metric
<b>Flow rate</b>		
adjustable to	0-37 gpm	0-142 lpm
<b>Port size</b>	1" 150# ANSI	
Inlet and Outlet	DIN #25 Flange	
<b>Air inlet</b>	0.375" NPTF	
<b>Air exhaust</b>	0.5" NPTF	
<b>Suction lift*</b>		
Dry (Teflon®)	15' (10')	4.57 m (3.05 m)
Wet (Teflon®)	25' (20')	7.62 m (6.09 m)
<b>Max. particle size</b>		
(Dia.)	0.125"	3.17 mm
<b>Shipping weight</b>		
Polypropylene	20.5 lbs	9.30 kg
Kynar®	21.5 lbs	9.75 kg
Aluminum	27.5 lbs	12.5 kg
Stainless Steel	38.5 lbs	17.5 kg
Hastelloy C	38.5 lbs	17.5 kg

Teflon® is a registered trademark of DuPont.

Kynar® is a registered trademark of Penwalt Corp.



**VERSA-MATIC® PUMP COMPANY**

A Unit of IDEX Corporation  
 6017 Enterprise Drive  
 Export, PA 15632-8969

(724) 327-7867

Fax: (724) 327-4300

[www.versamatic.com](http://www.versamatic.com)



©2002 Versa-Matic Tool, Inc.

VM-0502-1