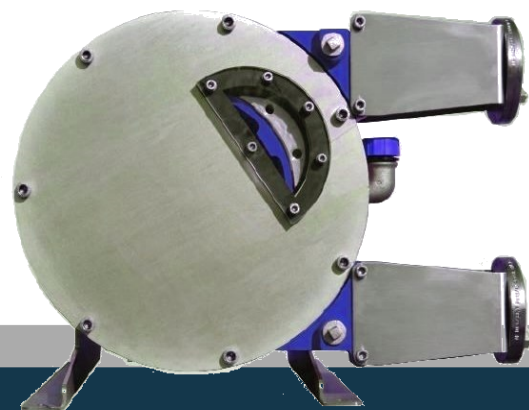
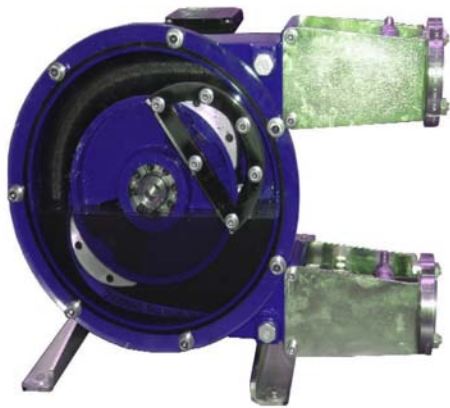


BEDU
≡ POMPEN ≡

Hose pumps for high pressure applications

BPSH series



made for your process

OPERATION

Two shoes mounted at 180° on a rotating wheel compress successively a reinforced rubber hose that contains a fluid to be pumped.

Vacuum is created as the hose returns to its original position and this causes the suction of the material which is pushed forward by the second shoe.

Particularly suitable to convey dirty liquids, thick and viscous mixtures as well as abrasive and corrosive liquids.

The rotor is supported by the heavy-duty bearings of the gear motor.

The pumps operates with constant lubrication mixture consisting of silicones/glycerine/glycols.

GENERAL FEATURES

- Suitable for continuous heavy duty (24/24) service
- P.D.: an excellent dosing pump
- Self-priming: no level differential required
- Neither valves, nor stuffing box: It can handle unrefined liquid even with small suspended particles
- Does not emulsify, nor does it create turbulence: recommended for some non-emulsifiable liquids
- Dry-operation: The pump can be dry operated without any damage to mechanical parts
- Vacuum: it can be used as a vacuum pump
- Reversible: easy to clean thanks to the reversible rotating direction
- Limited maintenance: Minimum time for maintenance; very easy hose replacement.

OPERATING LIMITS

Capacity: up to 150 m³/h

Pressure: up to 15 bar

Temperature: -15°C ÷ 80°C



MAIN APPLICATION FIELDS

- Food
- Dairy Products
- Chemical
- Pharmaceutical
- Cosmetic
- Textile
- Pulp & Paper
- Paints
- Construction
- Ceramic
- Water treatment
- Tanning
- Galvanic treatments
- Steel
- Batteries
- Mining

TYPICAL APPLICATIONS

- Slurries with sand or metal particles
- Cobalt, nickel slurries, percolation, high specific gravity golden/platinum slurries
- Lime milk; polyelectrolyte; caustic soda; mud in suspension: iron chloride; iron sulphate;
- Pigments for plastic; acids; solvents; polyester mixtures; detergents;
- Toothpaste; shampoo; soaps; creams;
- Bleaches; dyes; size;
- Adhesives; dyes; retainers; microbicides
- Paints; pigments for tiles and bricks; concrete additives; paste; silk-screen enamels; dyes, latex;
- Distilled water; acids.
- Brewer's yeast; edible fats; natural flavours; chocolate; ice creams; dietary food; milk; yoghurt

HOSE CONSTRUCTIVE FEATURES

We only work with high quality compounded rubbers, reinforced with 2 to 6 individual layers of braided polyamide and with an outer layer made to strict tolerances to ensure perfect compression and extended life.

For the hose inner layers, 5 materials are available to suit the various pumped fluids:

- NR (natural rubber)
(White marking)
- NBR (Buna)
(Yellow marking)
- NBR Food (Buna)
(White & yellow marking)
- EPDM (Red marking)
- HYPALON (Blue marking)



TABELLA DELLE PORTATE (l/h)

FLOW TABLE (l/h)

TYPE	10 RPM	20 RPM	40 RPM	60 RPM	80 RPM	100 RPM	120 RPM	140 RPM
BPSH 05 (3 lobes)	3.4	6.8	13.6	20.4				
BPSH 10 (3 lobes)	10	20	40	60				
BPSH 10	15	30	60	90	120	150	180	
BPSH 15	50	100	200	300	400	500	600	
BPSH 20	65	170	340	500	670	850	970	
BPSH 25	200	400	800	1 200	1 600	2 000	2 400	2 800
BPSH 32	375	750	1 500	2 250	3 000	3 750	4 500	5 250
BPSH 40	565	1 170	2 340	3 510	4 680	6 850	7 020	8 190
BPSHX 40	800	1 600	3 200	4 800	6 400	8 000		
BPSH 50	1750	3 500	7 000	10 500	14 000	17 500		
BPSH 65	2300	4 600	9 200	13 800	18 400	23 000		
	10 RPM	20 RPM	30 RPM	35 RPM	40 RPM	45 RPM	50 RPM	
BPSHX 80	5 500	11 000	16 500	19 250	22 000	24 750	27 500	
BPSH 80	7 000	14 000	21 000	24 500	28 000	31 500	35 000	
BPSH 100	12 000	24 000	36 000	42 000	48 000	54 000		
BPSH 125	22 000	44 000	66 000	77 000	88 000			

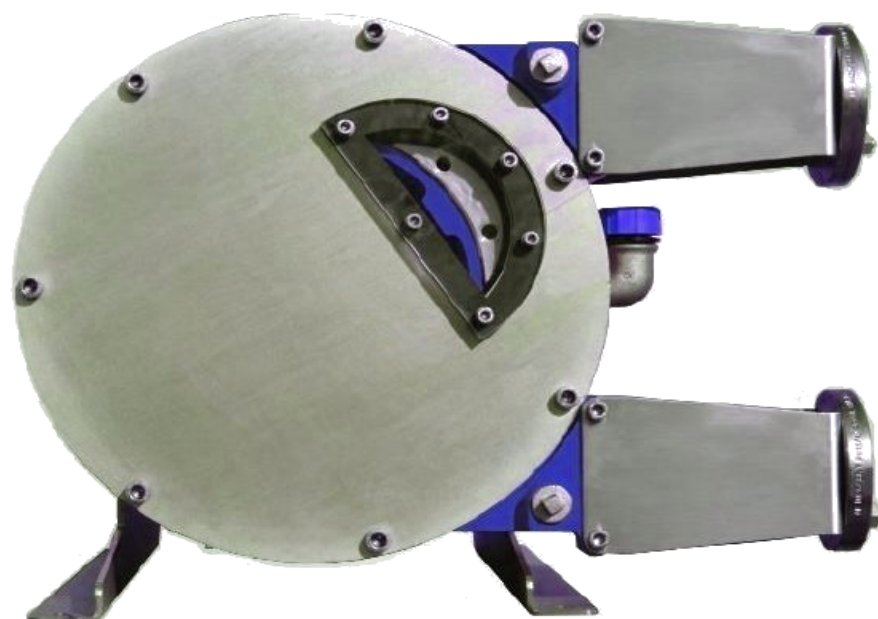
Continuous use

Intermittent use

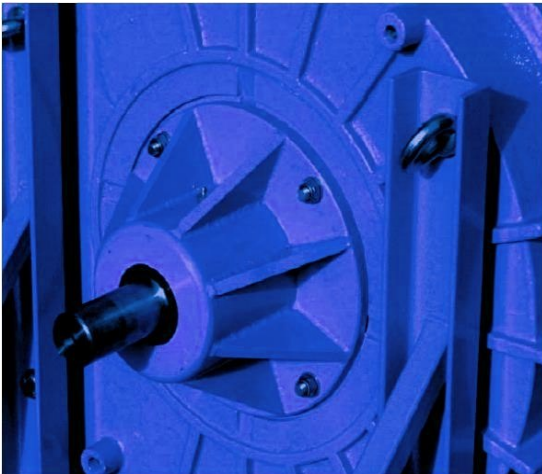
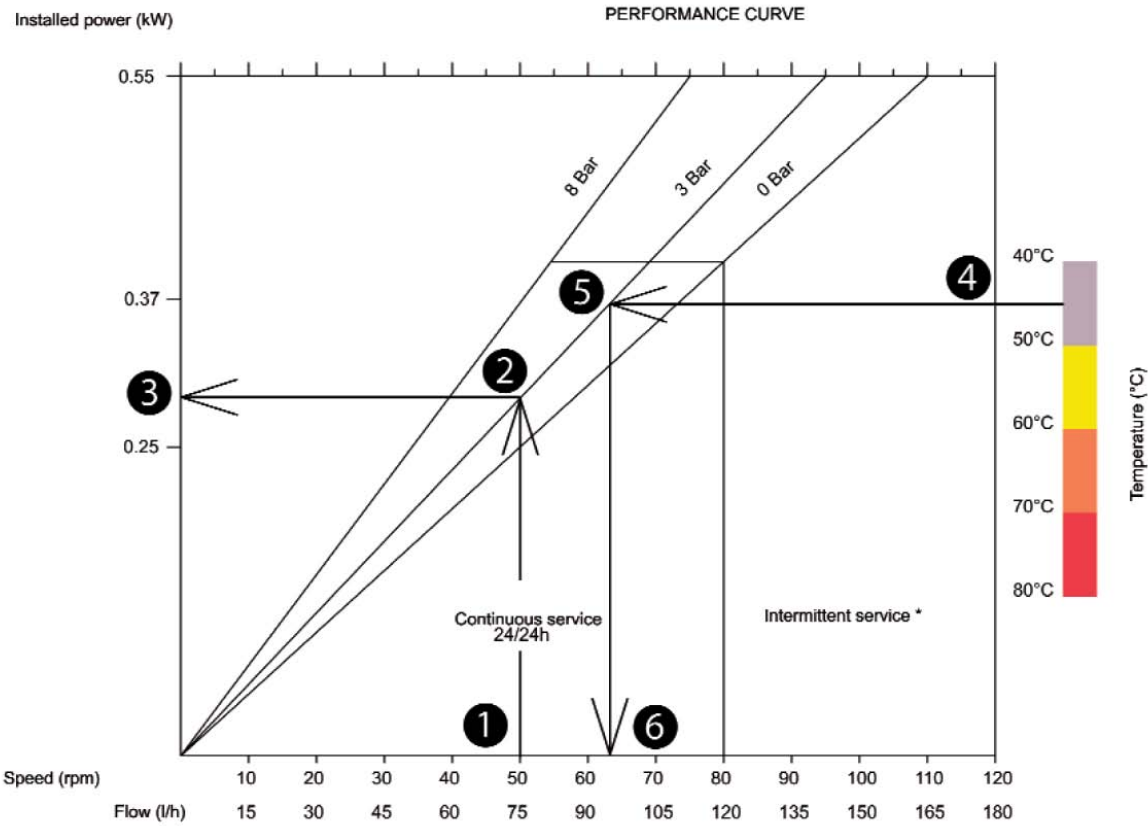
Occasional use

OPTIONS

- Twinhead pump, driven by the same gear motor.
- Special executions and different connections such as SMS, Clamp, DIN, ANSI, etc
- Hose rupture detector and revolution counter
- ATEX II 2G e II 3G certifications
- Customized executions upon request



HOW TO READ THE PUMP CURVE

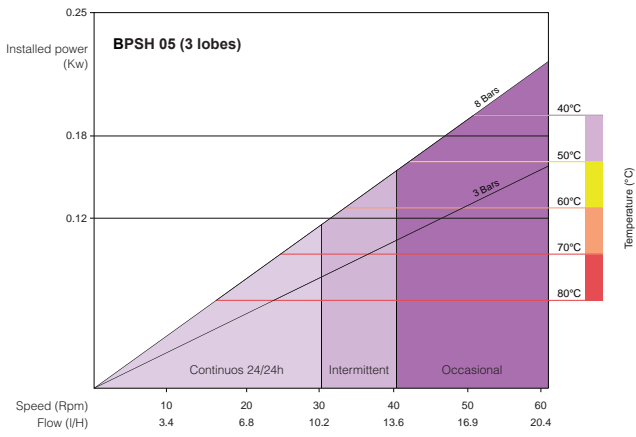


1. Select the required flow. This gives you the required pump speed.
2. Move upwards to the calculated discharge pressure.
3. Move to the left for the installed motor power.
4. Determine the fluid's max. temperature.
5. Move to the left to the calculated discharge pressure.
6. Move downwards to determine your maximum allowed pump speed for the fluids temperature.

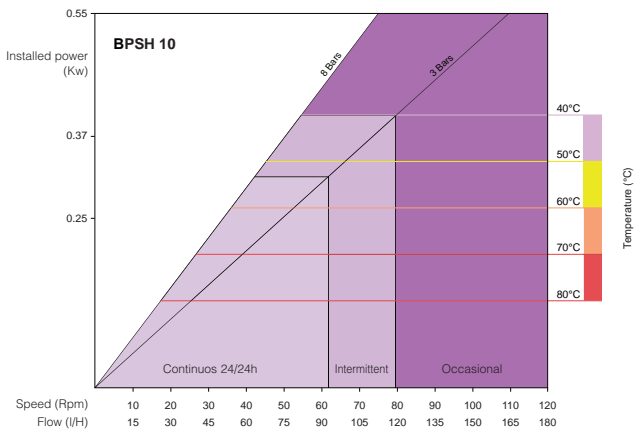
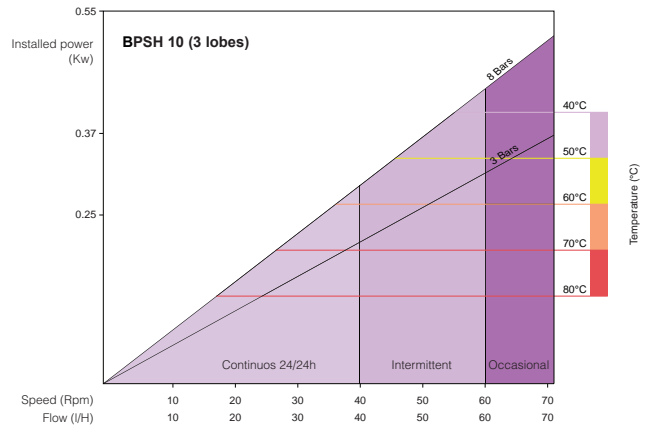
BPSH-S SERIES

Bedu has also developed the long-shaft version pumps, BPSH-S series. These pumps are equipped with a removable bearing case for easy bearing maintenance and can be converted into a close coupling BPSH type pump at any time.

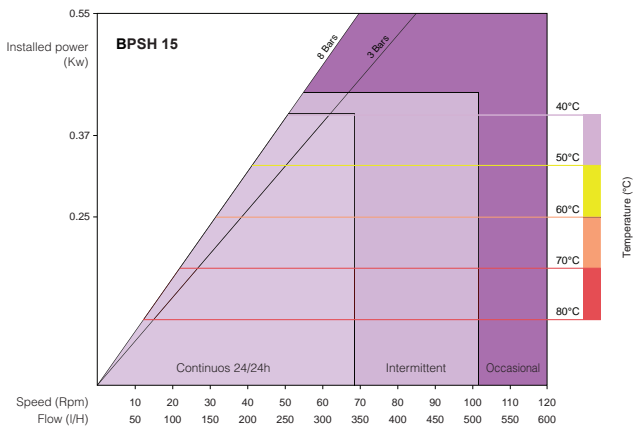
CURVE



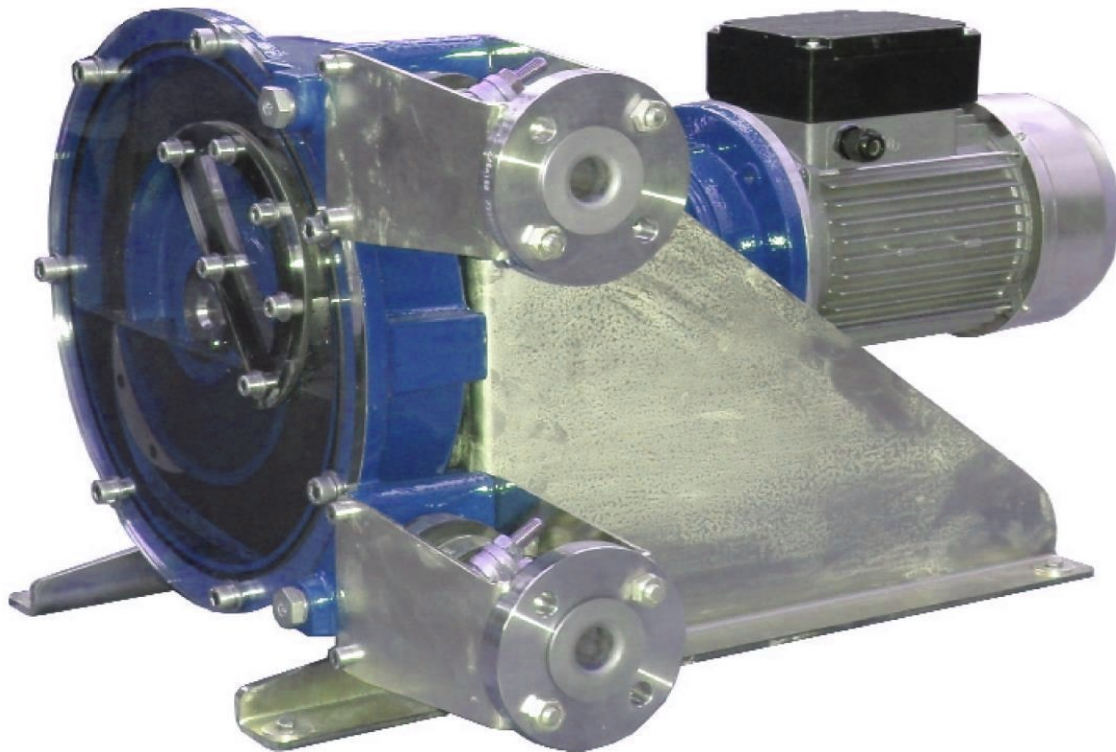
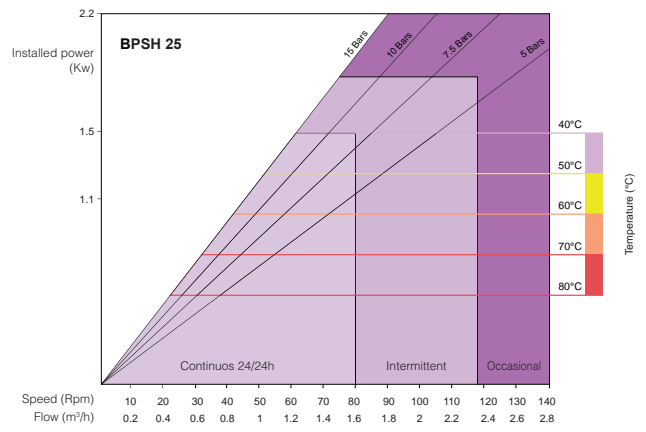
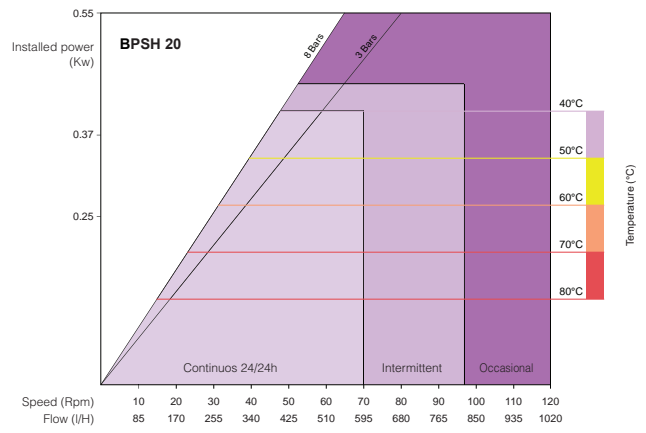
CURVES



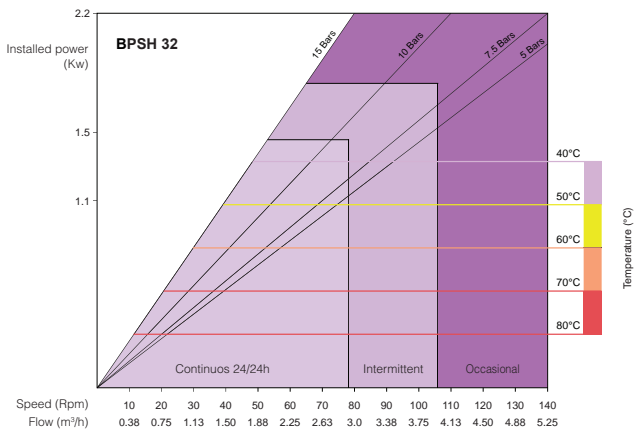
CURVE



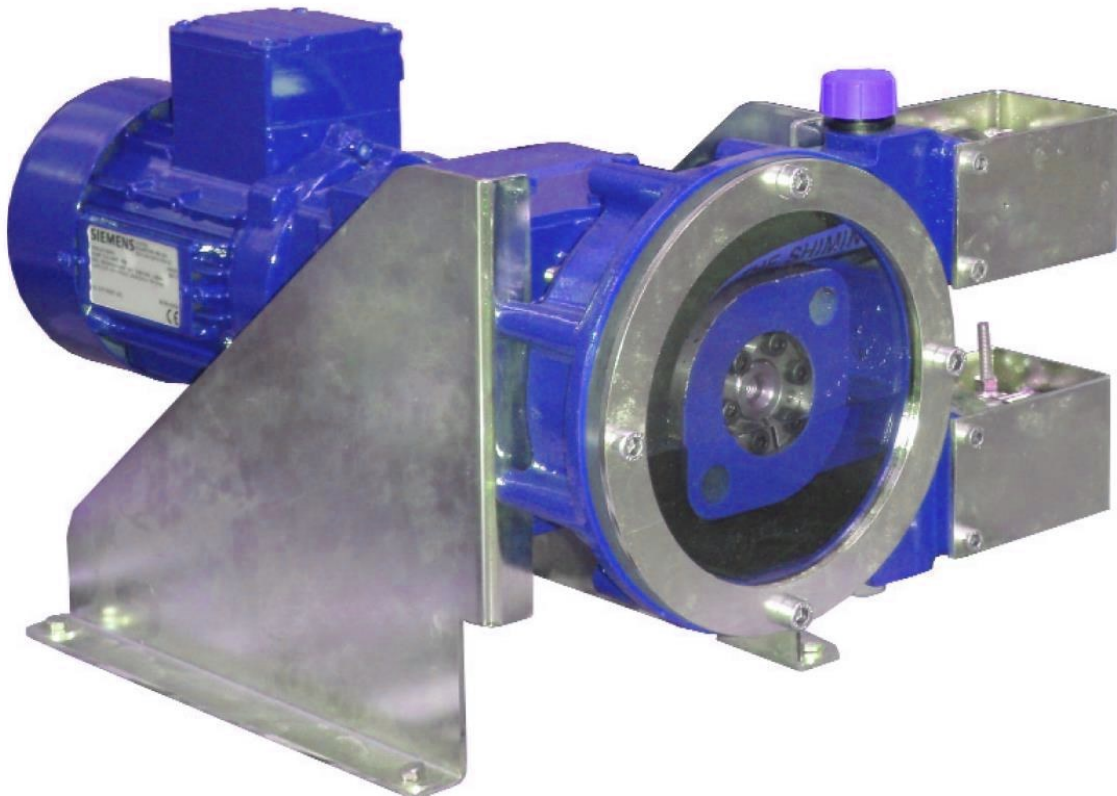
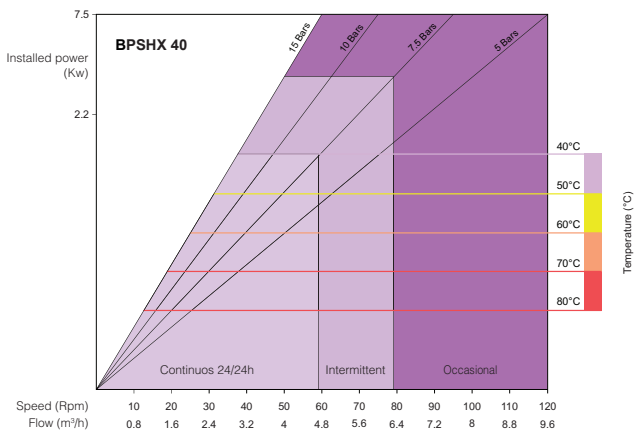
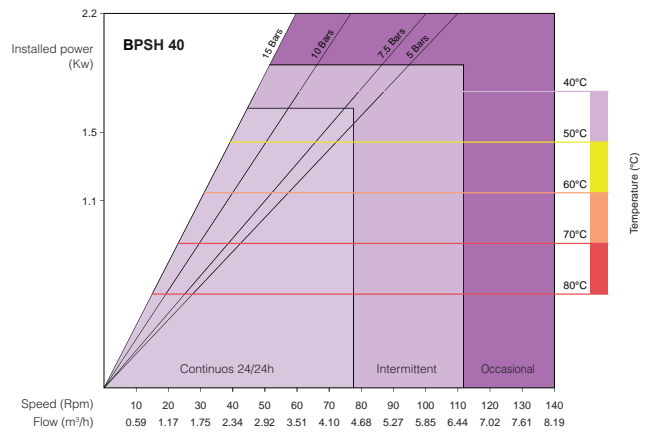
CURVES



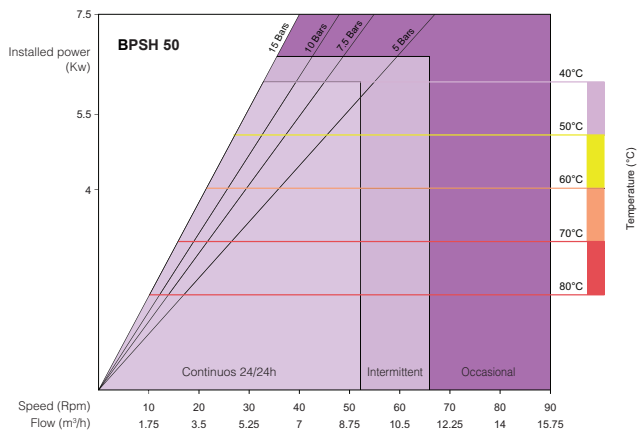
CURVE



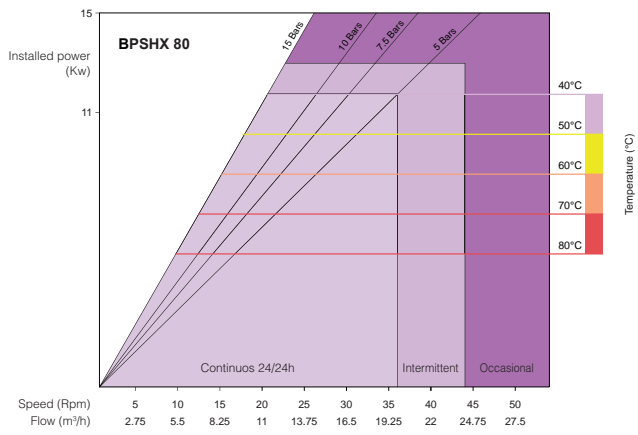
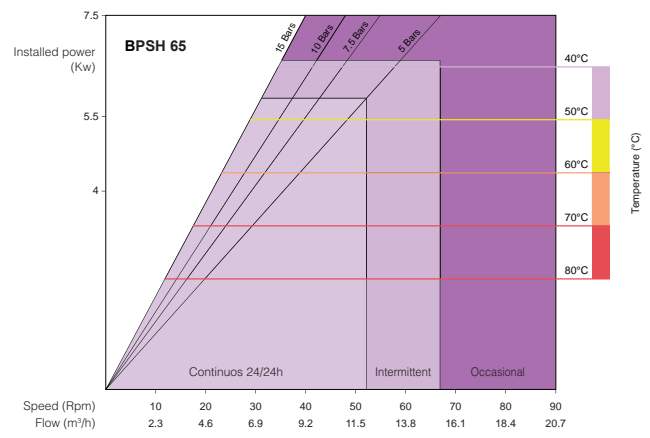
CURVES



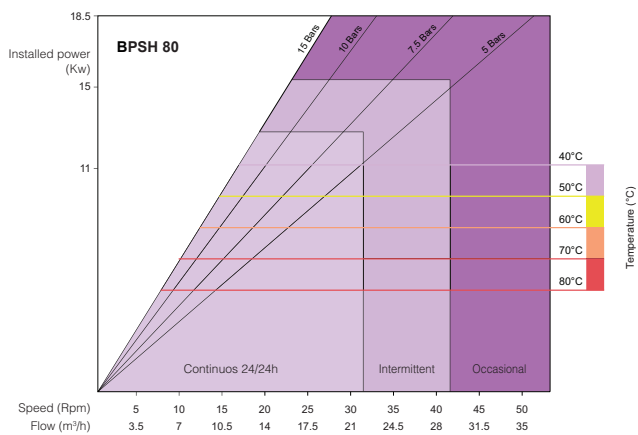
CURVE



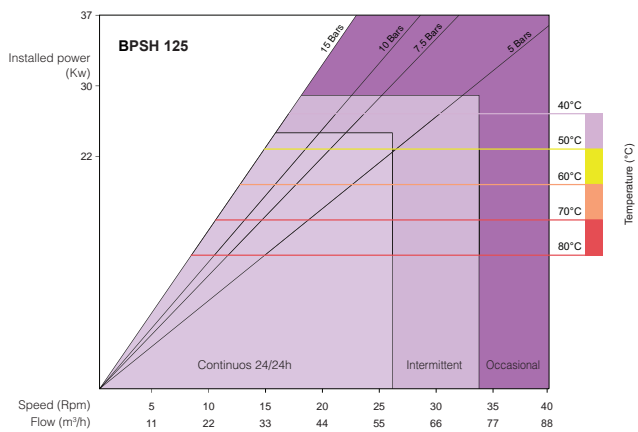
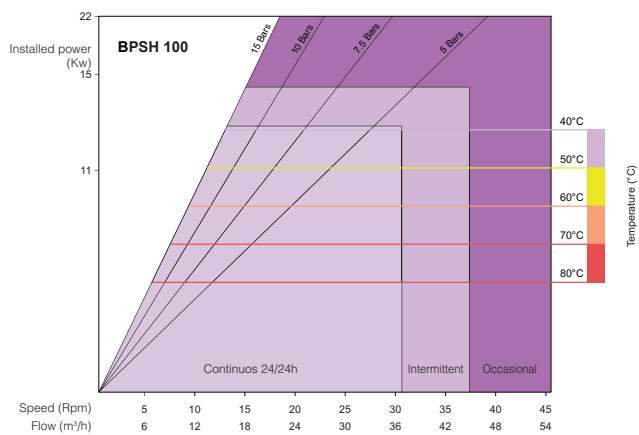
CURVES



CURVE

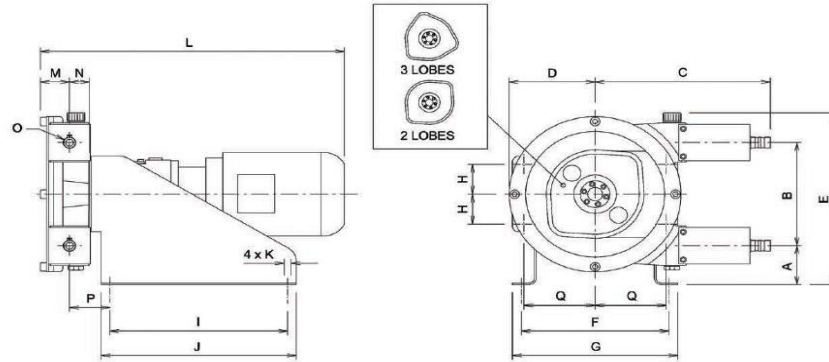


CURVES

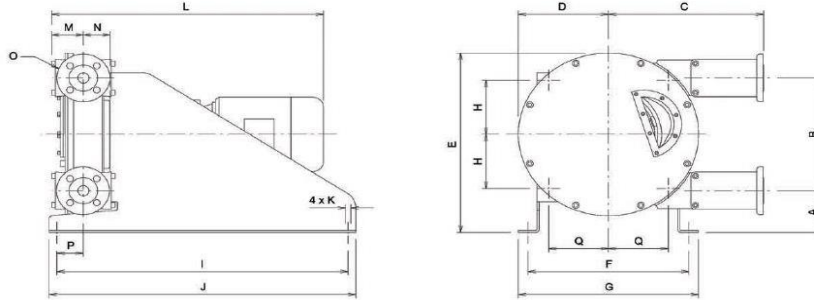


OVERALL DIMENSION DRAWING

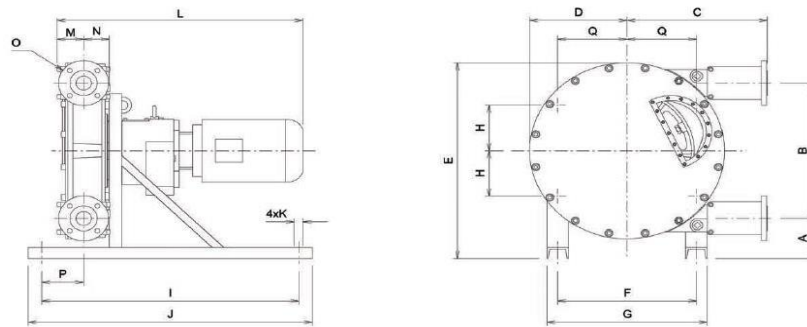
BPSH 05-20



BPSH 25-40



BPSHX 40-125



DIMENSIONS

Type	A	B	C	D	E	F	G	H	I	J	K	L	M	N	O (Flange ISO)	P	Q
BPSH 05	103,5	115	226	95	256	220	240	33,5	260	280	4xø9	-	46,5	34,5	ø16 *	56	81,25
BPSH 10	103,5	115	226	95	256	220	240	33,5	260	280	4xø9	-	46,5	34,5	ø16 *	56	81,25
BPSH 15	73	193	296	145	322	250	280	51,75	300	330	4xø13	-	49	35,5	ø20 *	68,8	124,75
BPSH 20	73	193	296	145	322	250	280	51,75	300	330	4xø13	-	49	35,5	ø25 *	68,8	124,75
BPSH 25	95	262	355,5	190	416	311	351	110	560	600	4xø13	-	65	69	DN25 PN16	61	110
BPSH 32	122,5	330	435,5	238	525,5	426	476	157,75	770	810	4xø13	-	83	89	DN32 PN16	109	157,75
BPSH 40	122,5	330	435,5	238	525,5	426	476	157,75	770	810	4xø13	-	83	89	DN40 PN16	109	157,75
BPSHX 40	110	430	400	291	616	340	420	170	850	950	4xø19	-	75	86	DN40 PN16	87	170
BPSH 50	164,5	554	517,5	360	801,5	513	593	186,5	950	1050	4xø19	-	94,5	102	DN50 PN16	152	256,5
BPSH 65	164,5	554	517,5	360	801,5	513	593	186,5	950	1050	4xø19	-	94,5	102	DN65 PN16	152	256,5
BPSHX 80	154	746	604	473	1004	580	680	290	1150	1250	4xø19	-	129	123	DN80 PN16	117	290
BPSH 80	262	876	803	555	1320	690	830	345	1300	1400	4xø27	-	140,5	142	DN80 PN16	210	345
BPSH 100	300	1040	887	685	1680	820	960	410	1900	2000	4xø27	-	149	174	DN100 PN16	295	410
BPSH 125	263,5	1273	1038	785	1750	1000	1140	500	1900	2000	4xø27	-	300	232	DN125 PN16	660	500

* = Hose tail

All dimensions and technical data are subject to change without prior notice

NEW!

BPSHX65 is now available!

A LARGER DN65 PUMP TO ENHANCE PUMP BPS4 PORTFOLIO

Bedu has expanded its product offering by adding the **BPSHX65** pump to its portfolio. The **BPSHX65** is recommended for applications requiring flow rates between 8 to 17 m³/h (35-75 gpm).

THE BPSHX65 INTEGRATES THE FAMILIAR ADVANTAGES OF THE ALH PORTFOLIO:

- ✓ Improved total cost of ownership relative to competition
- ✓ Competitive pricing
- ✓ Close coupled mounting that eliminates internal bearings
- ✓ Simple, robust and reliable pump design
- ✓ Quick, yet user-friendly maintenance
- ✓ Low shear stress that results in a longer hose life

TARGET MARKETS



Mining & Quarries



Ceramic



Waste Water Treatment



Processing Chemicals

APPLICATION EXAMPLES

- ✓ Lime Milk – Lime Slurry
- ✓ Thickener underflow
- ✓ Sludge removal
- ✓ Well dewatering
- ✓ Filter press feeding
- ✓ Truck/Tank unloading

Crescent-shaped window

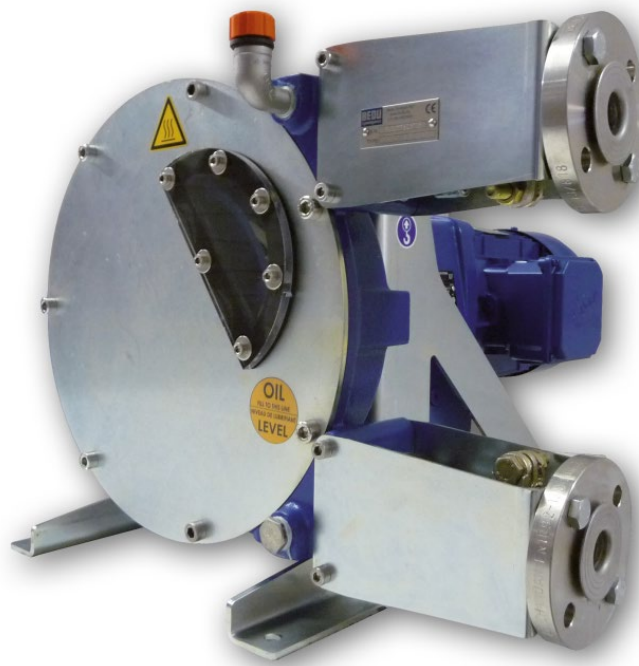
- Allows easy access for shimming without the need to drain lubricant - while maintaining cover rigidity.

Welded frame

- Increased stiffness while ensuring a lighter-weight design.

Drain valve

- Allows for easy lubricant removal when required



Casing, wheel and shoes

- The high quality GS400 ductile iron components provide improved mechanical strength and impact resistance.

C4 paint

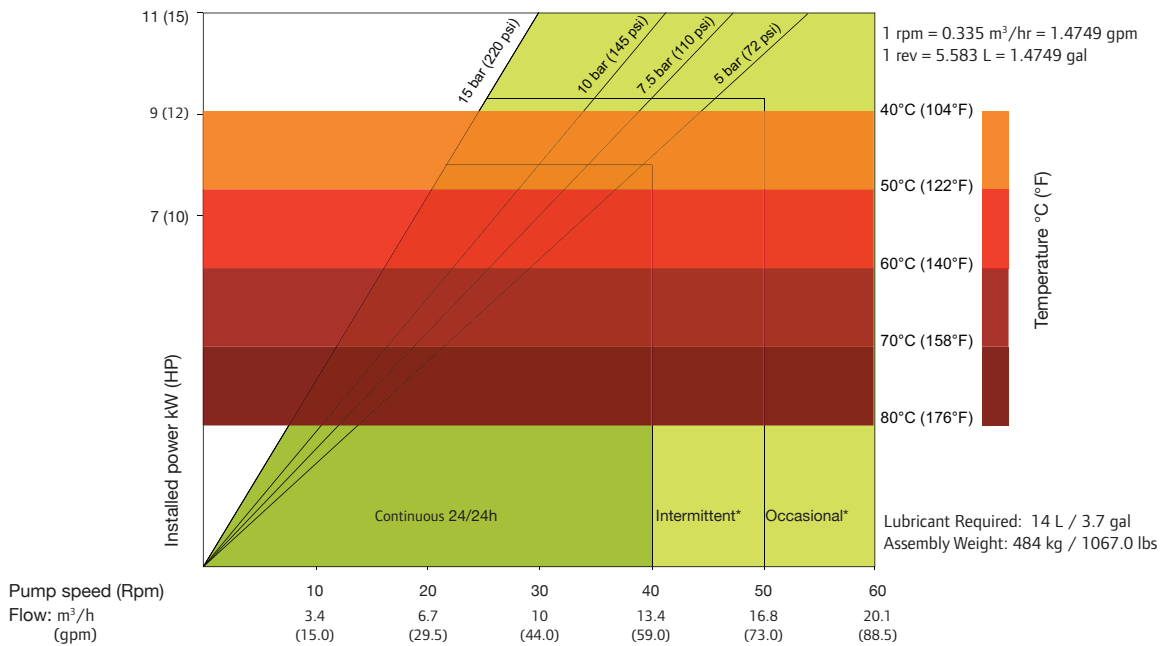
- This highly resistant coating is suitable for heavy duty and corrosive environments.

Connections and fittings

- Industrial grade clamps increase reliability and ease of maintenance.

BPSHX65

Data Sheet



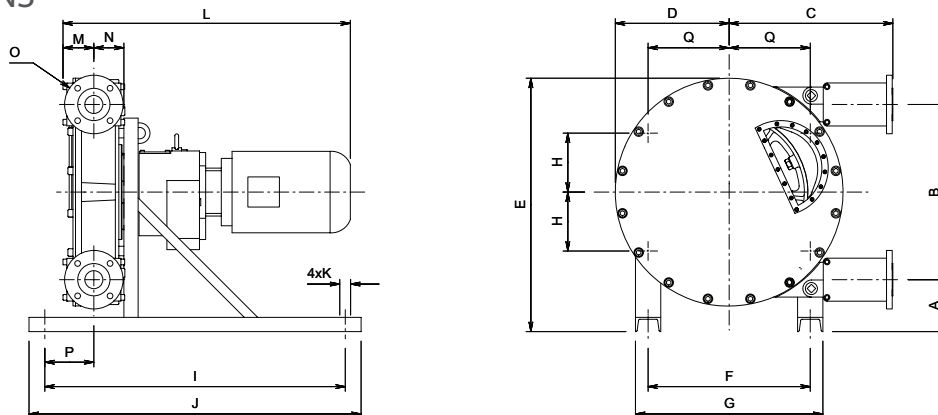
*Intermittent use : minimum one hour stop after 2 hours run / *Occasional use : maximum one hour a day

SHOE SHIMMING TABLE - BPSHX65		
Pressure bar (psi)	Speed - Rpm	Number of shims* - thickness 0.5 mm (0.019 in)
$\Delta P \leq 5$ (72.5)	0 to 25	0
	25 to 65	0
5 (72.5) $\leq \Delta P \leq 7.5$ (108.75)	0 to 25	2
	25 to 46	1
7.5 (108.75) $\leq \Delta P \leq 10$ (145)	0 to 25	3
	25 to 40	2
10 (145) $\leq \Delta P \leq 15$ (217.5)	0 to 25	4
	25 to 31	3

*Remove one shim if temperature exceeds 60° Celsius (140° Fahrenheit)

DIMENSIONS

mm (Inch)



TYPE	A	B	C	D	E	F	G	H	I	J	K	L	M	N	O	P	Q
BPSHX65	143 (5.6)	597 (23.5)	598 (23.5)	390 (15.3)	831 (32.7)	513 (20.1)	593 (23.3)	186 (7.3)	950 (37.4)	1050 (41.3)	4xø19 (4xø0.7)	-	113 (4.4)	113 (4.4)	DN65 PN16 ANSI 2.5 in / 150#	136 (5.3)	256 (10.0)



BEDU
≡ POMPEN ≡

made for your process

- Deskundig advies
- Een klantgerichte organisatie die zich aanpast aan de eisen en wensen van uw organisatie
- Innovatieve en maatwerkoplossingen
- Breed assortiment vloeistofpompen van gerenommeerde merken
- Meer dan 5.000 pompen en 20.000 onderdelen op voorraad
- Een snelle en passende oplossing voor al uw vraagstukken
- Wij zien het belang in van uw processen en de continuïteit van uw bedrijfsvoering
- Snelle reactie- en levertijden
- Een eigen Technische Dienst met uitgebreide testfaciliteiten, werkend vanuit onze eigen werkplaats of bij u op locatie
- Reparatie, onderhoud en revisie van alle soorten en merken vloeistofpompen
- Storingsdienst 24 uur per dag, 7 dagen in de week

BEDU POMPEN B.V.
Poort van Midden Gelderland Rood 10
6666 LT HETEREN
Nederland
Telefoon +31 (0)88 4802 900
Fax +31 (0)88 4802 901
E-mail info@bedu.nl

WWW.BEDU.NL

BEDU BELGIUM B.V.B.A.
Heuvelstraat 52
B-1981 HOFSTADE
België
Telefoon +32 (0)15 33 16 77
Fax +32 (0)15 33 16 73
E-mail info@bedu.be

WWW.BEDU.BE